

July 6, 2016



6312 NW 18<sup>th</sup> Drive  
Suite 100  
Gainesville, FL 32653

352.378.0332 PHONE  
352.378.0354 FAX

[www.TRCSolutions.com](http://www.TRCSolutions.com)

July 6, 2016

Ms. Lori Simmons  
Arkansas Department of Health  
4815 West Markham Street  
Little Rock, Arkansas 72205  
Via email [Lori.Simmons@arkansas.gov](mailto:Lori.Simmons@arkansas.gov)

**Re: Georgia-Pacific, Crossett Mill - Biweekly Air Monitoring Report for Hydrogen Sulfide**

Dear Ms. Simmons,

Following is the biweekly data summary for the Georgia-Pacific (GP) hydrogen sulfide (H<sub>2</sub>S) and meteorological monitoring program, at the GP Crossett mill, covering the calendar period of June 1<sup>st</sup> through June 14<sup>th</sup>.

Summary of Results

Included in this report are three plots presenting H<sub>2</sub>S concentrations calculated with varied rolling average periods (30-minute, 8-hour, and 24-hour).

Also included in this report is a summary of results from the daily 1-point QC checks performed during this biweekly period. The QAPP establishes goals for precision and bias as a coefficient of variation (CV) <10% and ± 10%, respectively. Precision and bias are calculated in accordance with 40 CFR Part 58 Appendix A, Section 4.1.

There was a single occurrence of data loss during this two week period, other than those resulting from automated daily 1-point QC and weekly calibration checks. On the evening of the 9<sup>th</sup>, the PC experienced a failure. The PC failure resulted in an extended period of data loss (approximately 13 hours); the PC was reset on the morning of June 10<sup>th</sup>. Results for all available automated daily 1-point QC checks fall within the acceptable range, indicating the H<sub>2</sub>S monitor was operating in accordance with the QAPP.

Fourteen-day time series plots for all recorded meteorological (met) parameters are presented in the final table. All met parameters have 100% data capture for this report period.

Please feel free to contact me if you have any questions or need any additional data.



July 6, 2016

Sincerely,



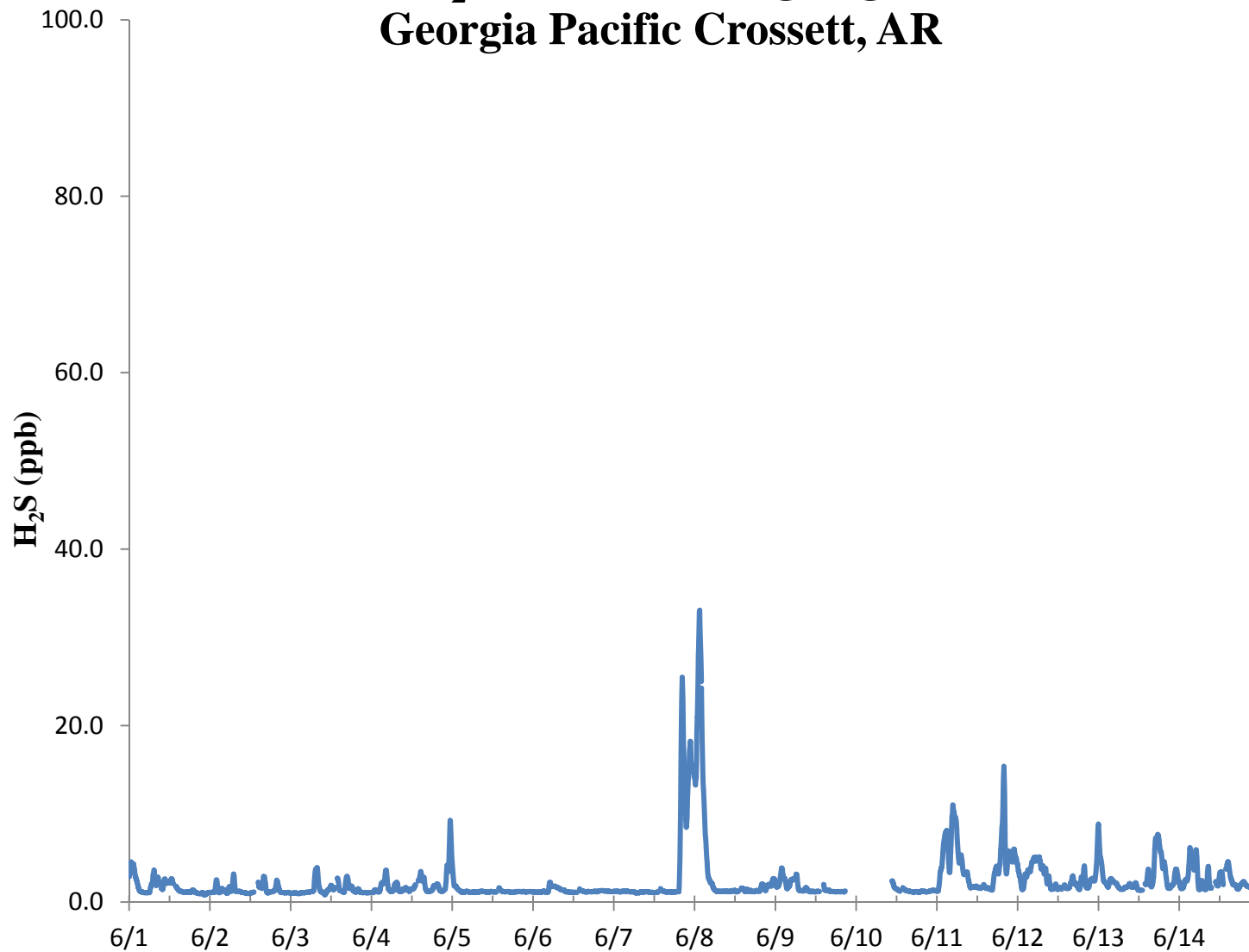
---

Jonathan Bowser  
Manager, Air Quality and Meteorological Monitoring

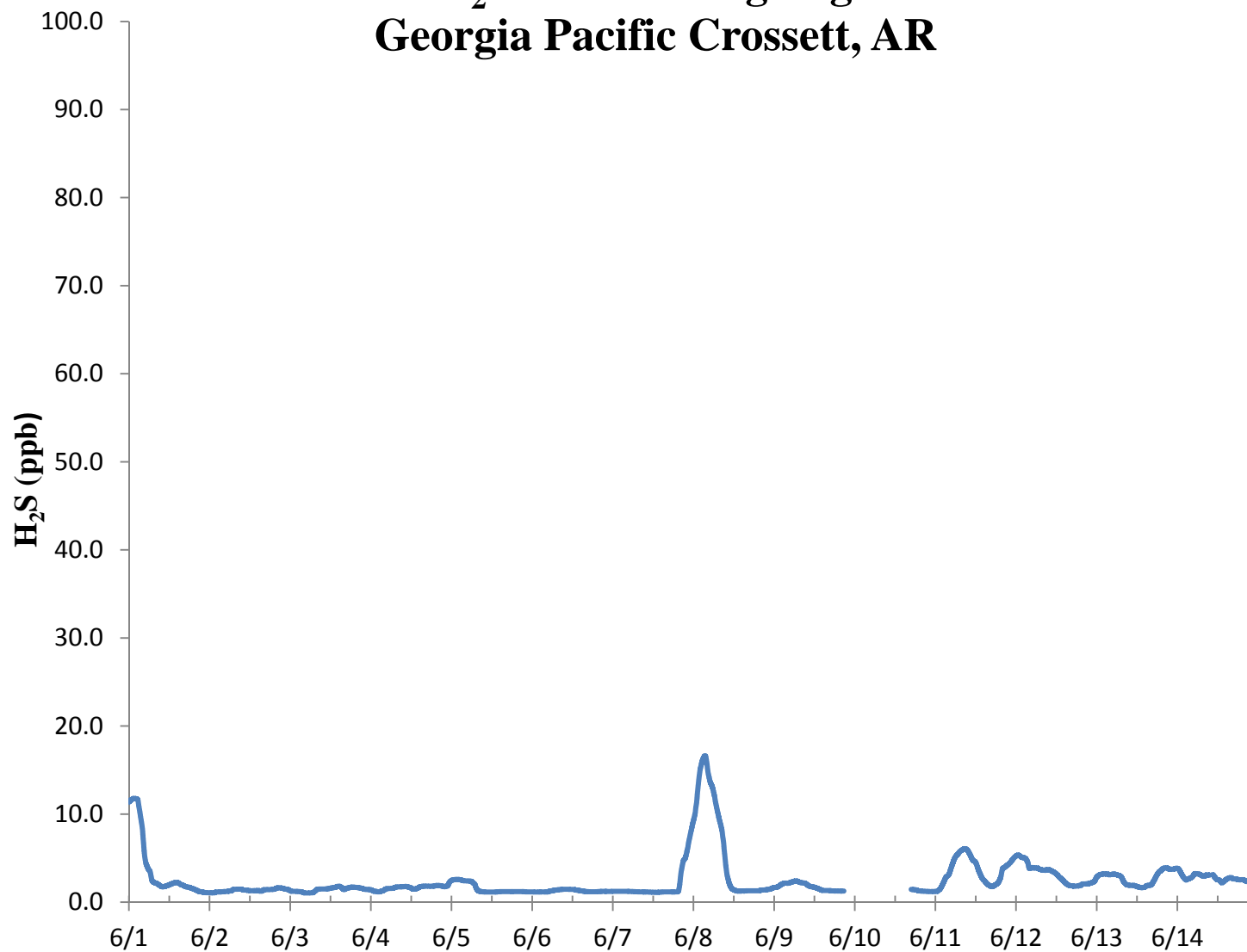
Air Measurements – Gainesville Office  
6312 NW 18th Drive, Suite 100  
Gainesville, Florida 32653  
(352) 260-1162  
Email: [jbowser@trcsolutions.com](mailto:jbowser@trcsolutions.com)

CC: Becky Keough, ADEQ Director via email: [keogh@adeq.state.ar.us](mailto:keogh@adeq.state.ar.us)  
Kara Allen, Environmental Engineer, USEPA Region 6 via email [Allen.Kara@epa.gov](mailto:Allen.Kara@epa.gov)

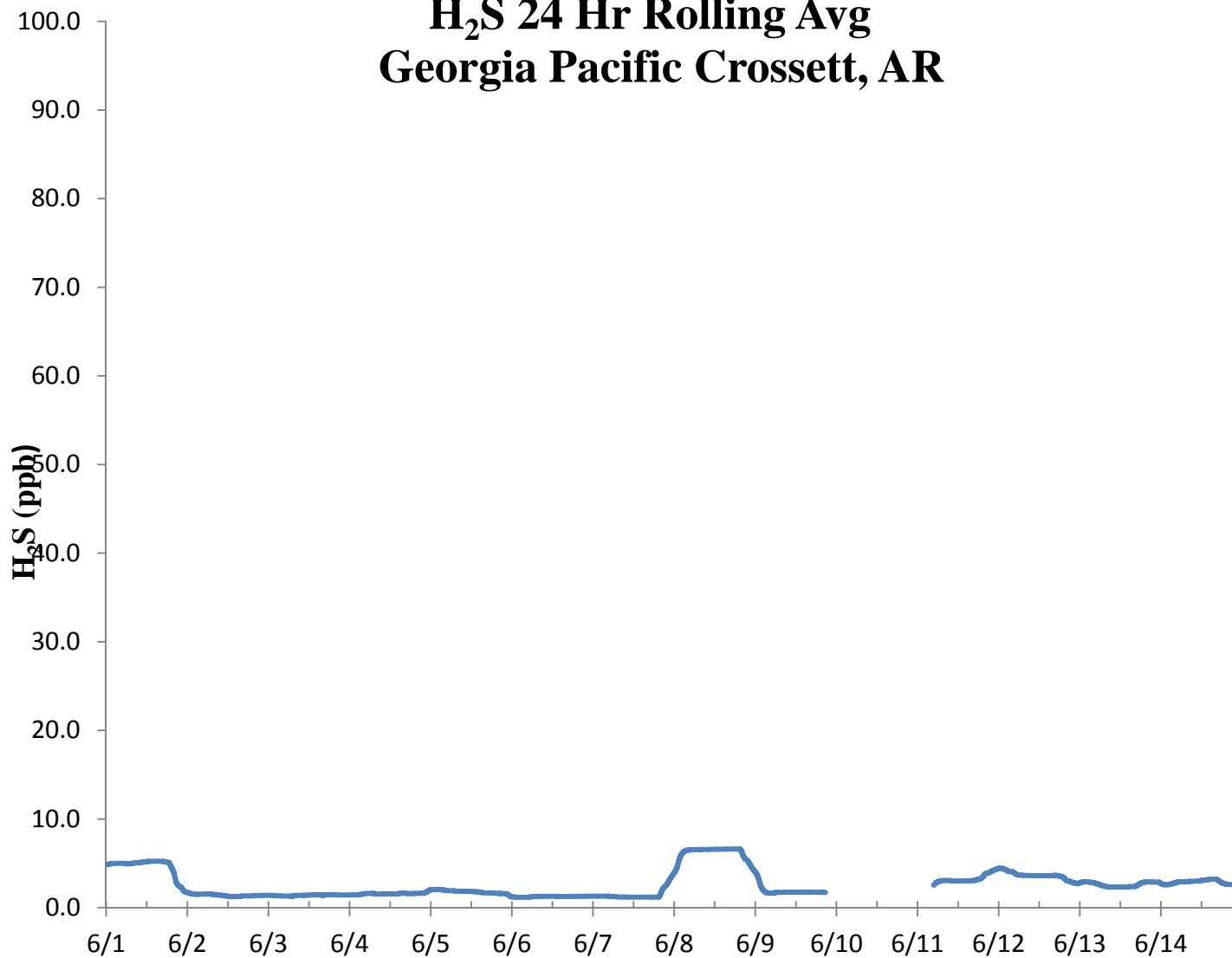
### H<sub>2</sub>S 30 Min Rolling Avg Georgia Pacific Crossett, AR



### H<sub>2</sub>S 8 Hr Rolling Avg Georgia Pacific Crossett, AR



## H<sub>2</sub>S 24 Hr Rolling Avg Georgia Pacific Crossett, AR



### H<sub>2</sub>S Assessment

GP - Crossett, AR			Constituent type: H <sub>2</sub> S					CV <sub>ub</sub> (%)	Bias (%)
Date	Meas Val (Y)	Audit Val (X)	d (Eqn. 1)	25th Percentile	d <sup>2</sup>	d	d  <sup>2</sup>		
6/1/2016 13:00	70.0	70.0	0.0	0.143	0.000	0.000	0.000		
6/2/2016 13:00	70.4	70.0	0.6	<b>75th Percentile</b>	0.327	0.571	0.327		
6/3/2016 13:00	70.3	70.0	0.4	0.571	0.184	0.429	0.184		
6/4/2016 13:00	70.5	70.0	0.7		0.510	0.714	0.510		
6/5/2016 13:00	70.3	70.0	0.4		0.184	0.429	0.184		
6/6/2016 13:00	70.1	70.0	0.1		0.020	0.143	0.020		
6/7/2016 13:00	69.9	70.0	-0.1		0.020	0.143	0.020		
6/8/2016 13:00	70.0	70.0	0.0		0.000	0.000	0.000		
6/9/2016 13:00	70.3	70.0	0.4		0.184	0.429	0.184		
6/10/2016 13:00	70.1	70.0	0.1		0.020	0.143	0.020		
6/11/2016 13:00	70.4	70.0	0.6		0.327	0.571	0.327		
6/12/2016 13:00	70.6	70.0	0.9		0.735	0.857	0.735		
6/13/2016 13:00	70.6	70.0	0.9		0.735	0.857	0.735		
6/14/2016 13:00	70.4	70.0	0.6		0.327	0.571	0.327		

<b>n</b>	<b>S<sub>d</sub></b>	<b>S<sub>d2</sub></b>	<b>Σ d </b>	<b>"AB" (Eqn 4)</b>
14	0.323	0.256	5.857	0.418
<b>n-1</b>	<b>Σd</b>	<b>Σd<sup>2</sup></b>	<b>Σ d <sup>2</sup></b>	<b>"AS" (Eqn 5)</b>
13	5.571	3.571	3.571	0.294

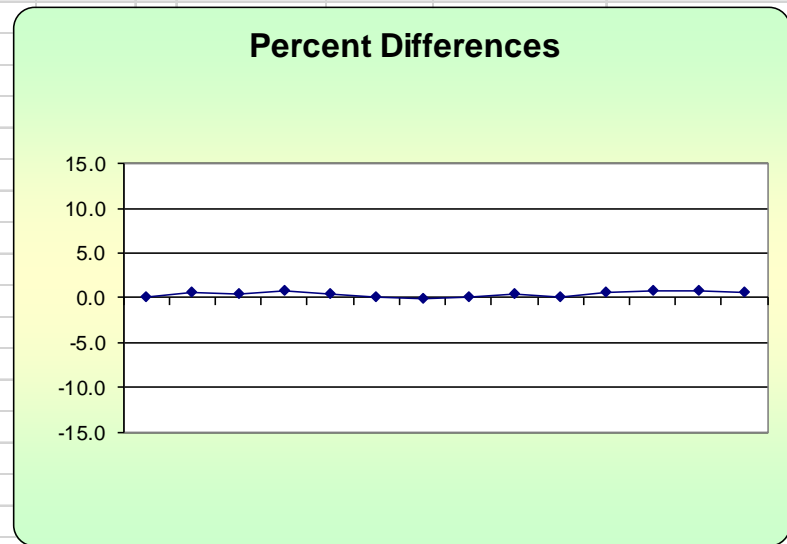
<b>Bias (%) (Eqn 3)</b>	Both Signs Positive
0.56	TRUE
<b>Signed Bias (%)</b>	Both Signs Negative
+0.56	FALSE

<b>CV (%) (Eqn 2)</b>	
0.44	

<b>Upper Probability Limit</b>	<b>Lower Probability Limit</b>
1.03	-0.23



Meteorological Summary

