

6312 NW 18th Drive
Suite 100
Gainesville, FL 32653

352.378.0332 PHONE
352.378.0354 FAX

www.TRCSolutions.com

October 28, 2016

Ms. Lori Simmons
Arkansas Department of Health
4815 West Markham Street
Little Rock, Arkansas 72205
Via email Lori.Simmons@arkansas.gov

Re: Georgia-Pacific, Crossett Mill - Biweekly Air Monitoring Report for Hydrogen Sulfide

Dear Ms. Simmons,

Following is the biweekly data summary for the Georgia-Pacific (GP) hydrogen sulfide (H₂S) and meteorological monitoring program, at the GP Crossett mill, covering the calendar period of September 21st through October 4th.

Summary of Results

Included in this report are three plots presenting H₂S concentrations calculated with varied rolling average periods (30-minute, 8-hour, and 24-hour). Please note, observed H₂S concentrations were elevated on September 25th, 28th, and 30th. Please refer to the table below for the highest concentrations during this two week period.

Date	Averaging Time	Concentration (ppb)
9/25/2016	30-minute	148.29
9/25/2016	8-hour	90.22
9/28/16	30-minute	83.62
9/29/2016	8-hour	28.30
9/30/2016	30-minute	113.98
10/1/2016	8-hour	49.35

Also included in this report is a summary of results from the daily 1-point QC checks performed during this biweekly period. The QAPP establishes goals for precision and bias as a coefficient of variation (CV) <10% and ± 10%, respectively. Precision and bias are calculated in accordance with 40 CFR Part 58 Appendix A, Section 4.1.

There were no occurrences of data loss, other than those resulting from automated daily 1-point QC and weekly calibration checks. Results for all automated daily 1-point QC checks fall within the



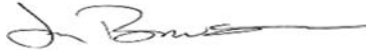
October 28, 2016

acceptable range, indicating the H₂S monitor was operating in accordance with the QAPP.

Fourteen-day time series plots for all recorded meteorological (met) parameters are presented in the final table. All met parameters have 100% data capture for this report period.

Please feel free to contact me if you have any questions or need any additional data.

Sincerely,

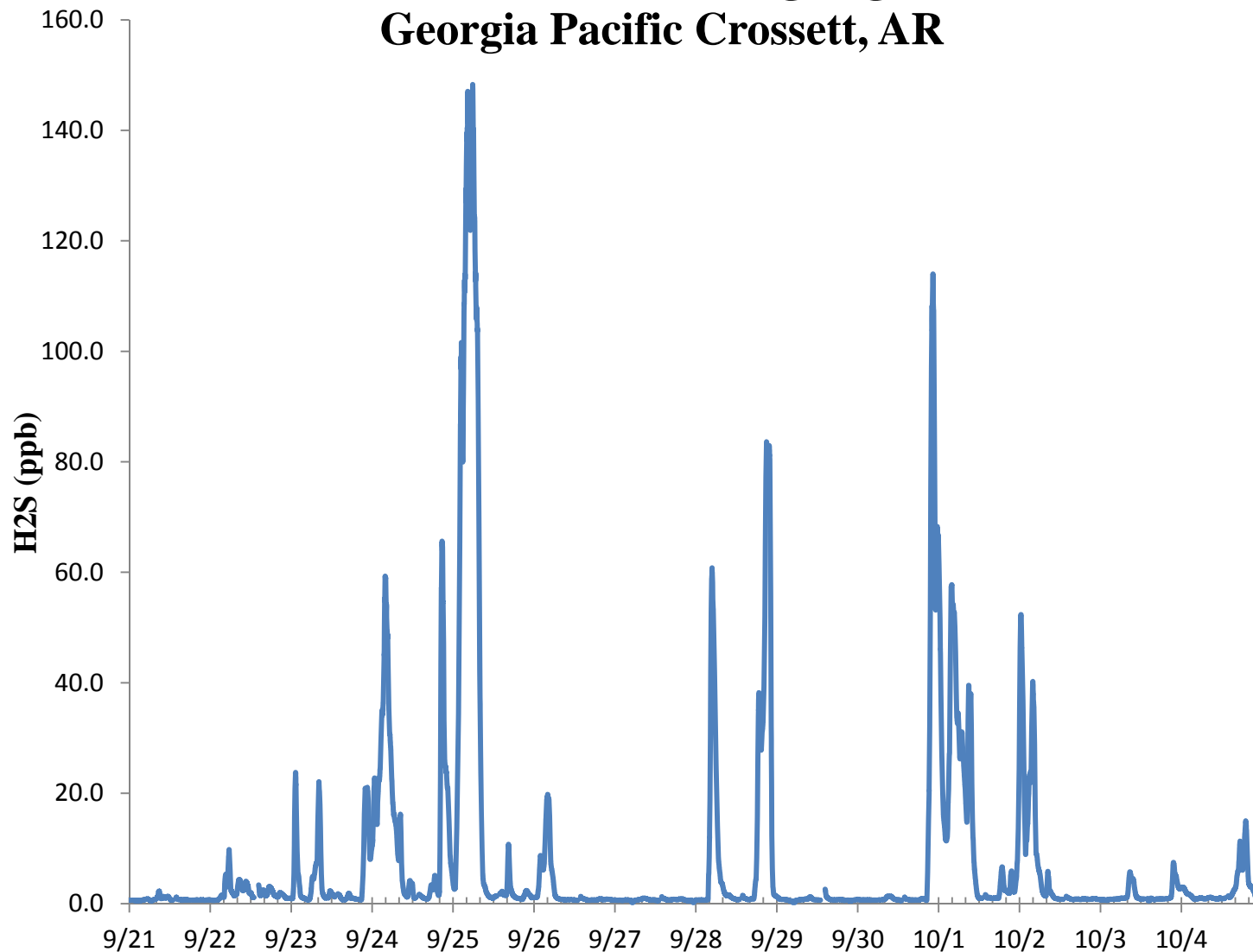


Jonathan Bowser
Manager, Air Quality and Meteorological Monitoring

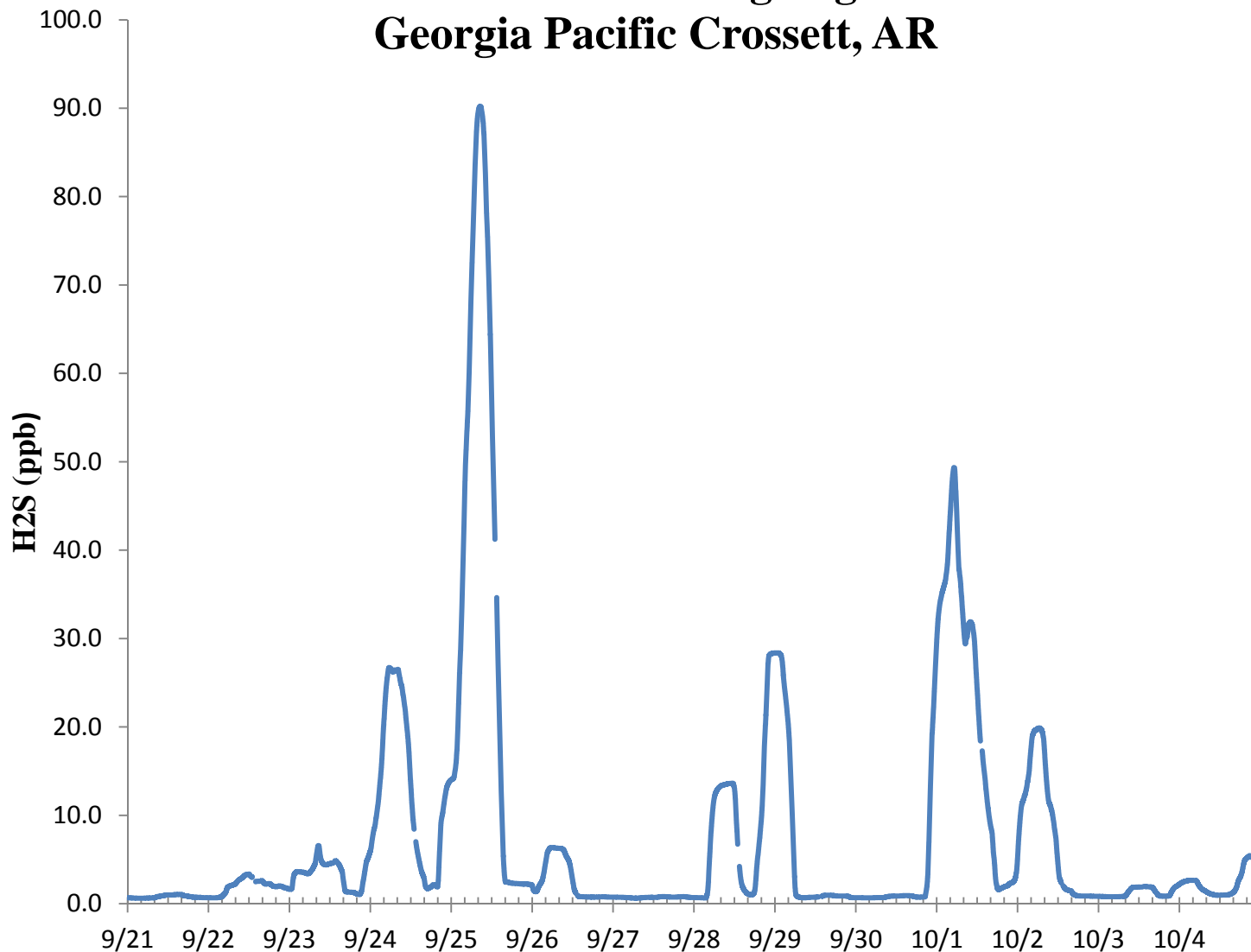
Air Measurements – Gainesville Office
6312 NW 18th Drive, Suite 100
Gainesville, Florida 32653
(352) 260-1162
Email: jbowser@trcsolutions.com

CC: Becky Keough, ADEQ Director via email: keogh@adeq.state.ar.us
Kara Allen, Environmental Engineer, USEPA Region 6 via email Allen.Kara@epa.gov

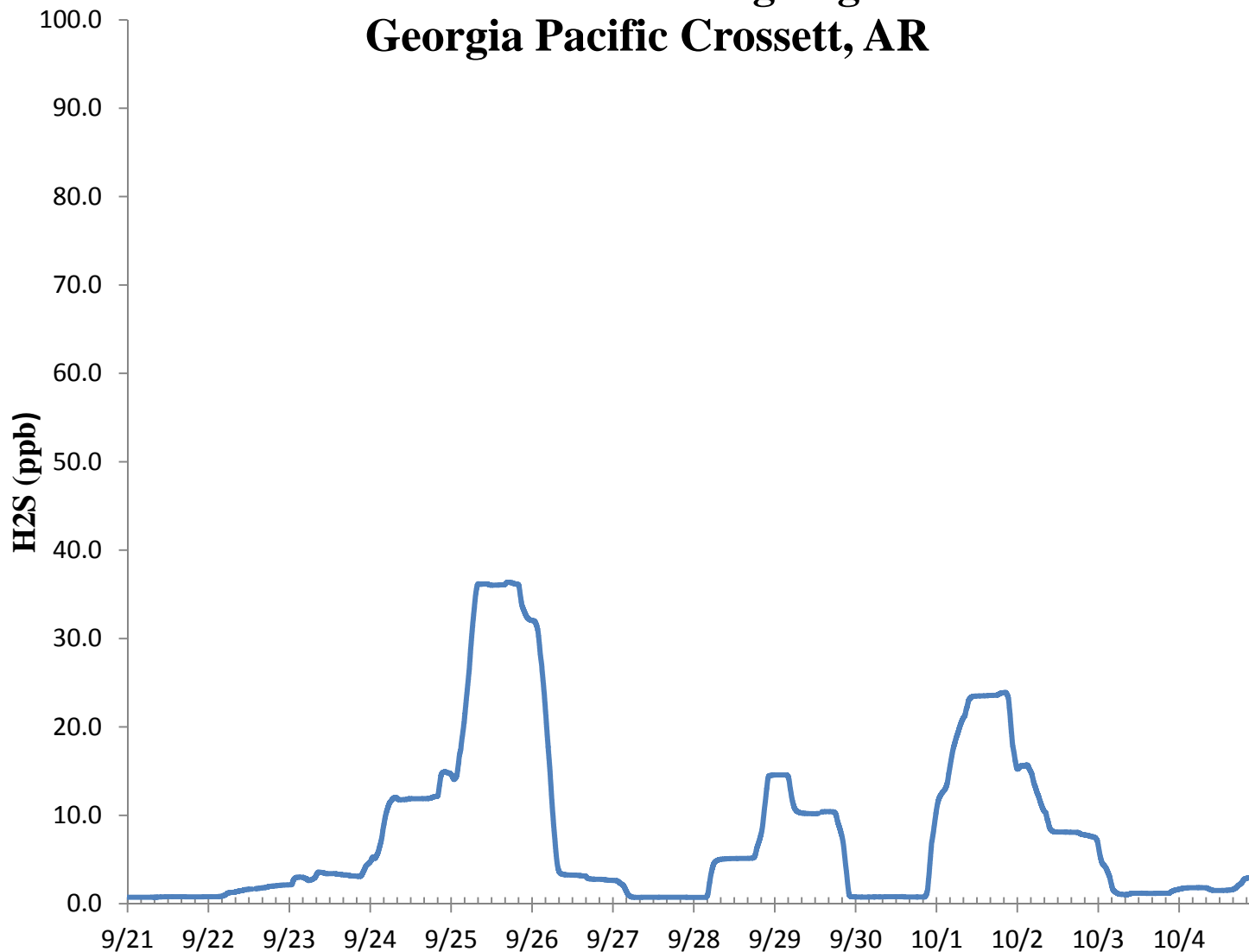
H2S 30 Min Rolling Avg Georgia Pacific Crossett, AR



H2S 8 Hr Rolling Avg Georgia Pacific Crossett, AR

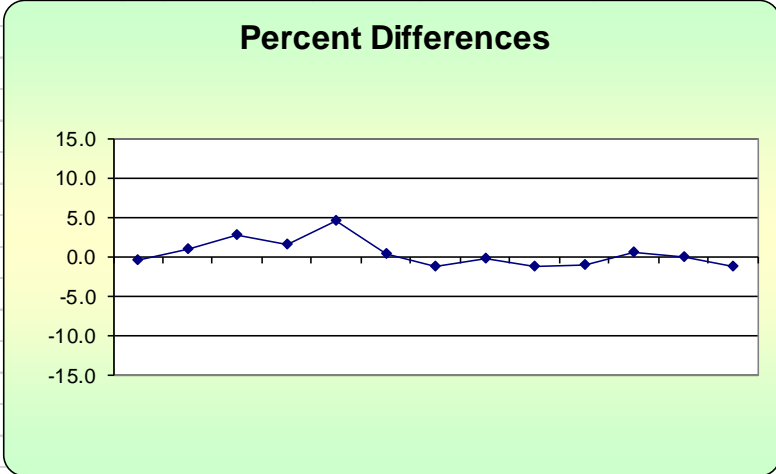


H2S 24 Hr Rolling Avg Georgia Pacific Crossett, AR



H₂S Assessment

GP - Crossett, AR			Compound of Interest: H ₂ S					CV _{ub} (%)	Bias (%)
Date	Meas Val (Y)	Audit Val (X)	d (Eqn. 1)	25th Percentile	d ²	d	d ²		
9/21/2016 13:00	69.7	70.0	-0.4	-1.000	0.184	0.429	0.184		
9/22/2016 13:00	70.7	70.0	1.0	75th Percentile	1.000	1.000	1.000		
9/23/2016 13:00	71.9	70.0	2.7	0.893	7.367	2.714	7.367	n	S_d
9/24/2016 13:00	71.1	70.0	1.6		2.469	1.571	2.469	14	1.690
9/25/2016 13:00	73.2	70.0	4.6		20.898	4.571	20.898	n-1	S_{d2}
9/26/2016 13:00	70.2	70.0	0.3		0.082	0.286	0.082	13	5.546
9/27/2016 13:00	69.2	70.0	-1.1		1.306	1.143	1.306	Σ d 	16.857
9/28/2016 13:00	69.9	70.0	-0.1		0.020	0.143	0.020	Σd	4.571
9/29/2016 13:00	69.1	70.0	-1.3		1.653	1.286	1.653	Σd²	38.612
9/30/2016 13:00	69.3	70.0	-1.0		1.000	1.000	1.000	Σ d ²	38.612
10/1/2016 13:00	70.4	70.0	0.6		0.327	0.571	0.327	"AB" (Eqn 4)	1.204
10/2/2016 13:00	70.0	70.0	0.0		0.000	0.000	0.000	"AS" (Eqn 5)	1.187
10/3/2016 13:00	69.2	70.0	-1.1		1.306	1.143	1.306	Bias (%) (Eqn 3)	1.77
10/4/2016 13:00	69.3	70.0	-1.0		1.000	1.000	1.000	Signed Bias (%)	+/-1.77
								CV (%) (Eqn 2)	2.3
								Upper Probability Limit	3.64
								Lower Probability Limit	-2.99



Meteorological Summary

