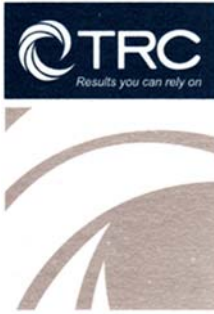


October 28, 2016



6312 NW 18<sup>th</sup> Drive  
Suite 100  
Gainesville, FL 32653

352.378.0332 PHONE  
352.378.0354 FAX

[www.TRCSolutions.com](http://www.TRCSolutions.com)

October 28, 2016

Ms. Lori Simmons  
Arkansas Department of Health  
4815 West Markham Street  
Little Rock, Arkansas 72205  
Via email [Lori.Simmons@arkansas.gov](mailto:Lori.Simmons@arkansas.gov)

**Re: Georgia-Pacific, Crossett Mill - Biweekly Air Monitoring Report for Hydrogen Sulfide**

Dear Ms. Simmons,

Following is the biweekly data summary for the Georgia-Pacific (GP) hydrogen sulfide (H<sub>2</sub>S) and meteorological monitoring program, at the GP Crossett mill, covering the calendar period of October 5<sup>th</sup> through October 18<sup>th</sup>.

#### Summary of Results

Included in this report are three plots presenting H<sub>2</sub>S concentrations calculated with varied rolling average periods (30-minute, 8-hour, and 24-hour).

Also included in this report is a summary of results from the daily 1-point QC checks performed during this biweekly period. The QAPP establishes goals for precision and bias as a coefficient of variation (CV) <10% and ± 10%, respectively. Precision and bias are calculated in accordance with 40 CFR Part 58 Appendix A, Section 4.1.

There were no occurrences of data loss, other than those resulting from automated daily 1-point QC and weekly calibration checks. Results for all automated daily 1-point QC checks fall within the acceptable range, indicating the H<sub>2</sub>S monitor was operating in accordance with the QAPP.

Fourteen-day time series plots for all recorded meteorological (met) parameters are presented in the final table. All met parameters have 100% data capture for this report period.

Please feel free to contact me if you have any questions or need any additional data.

Sincerely,

A handwritten signature in black ink, appearing to read 'J. B. Buss', is written over a light blue horizontal line.



October 28, 2016

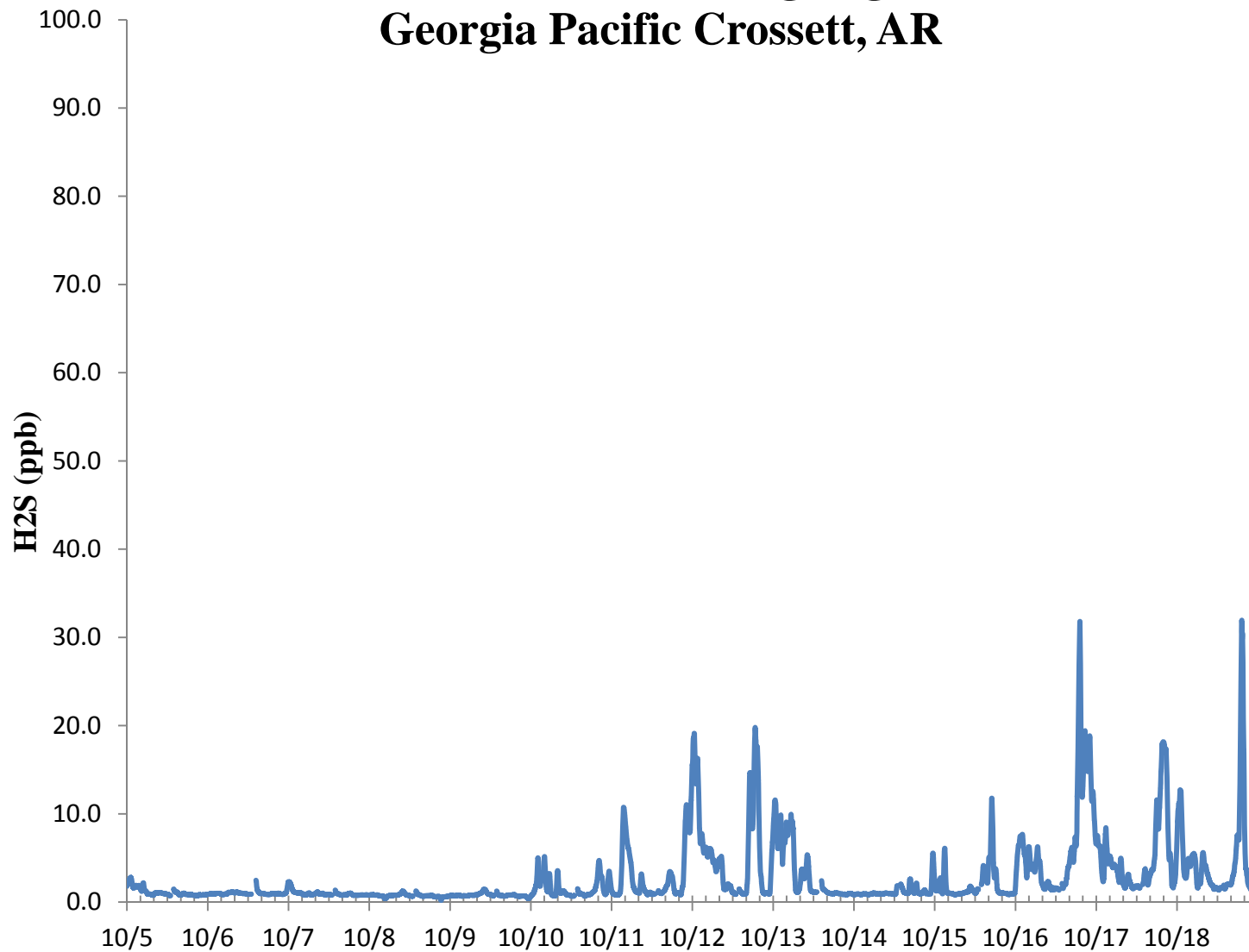
---

Jonathan Bowser  
Manager, Air Quality and Meteorological Monitoring

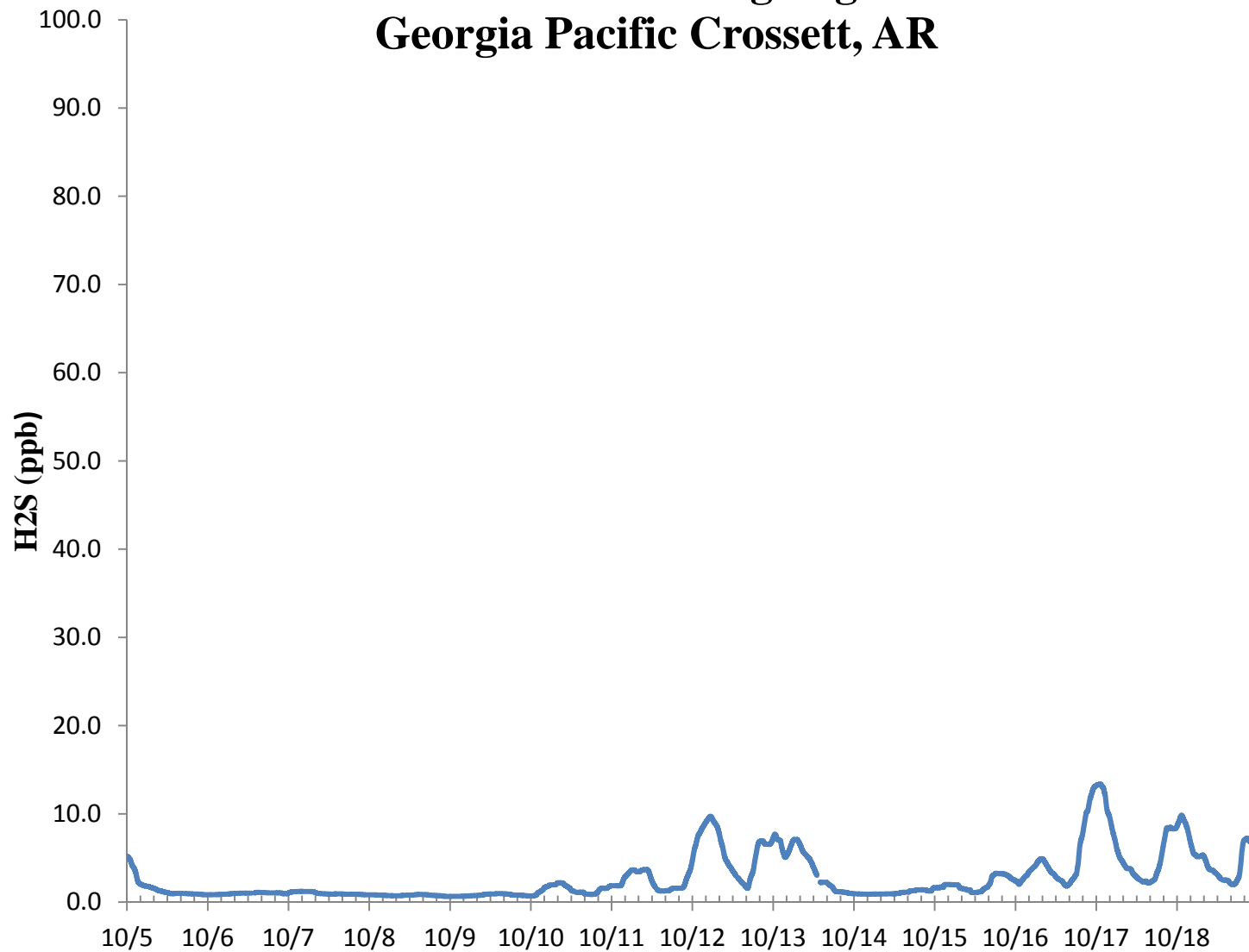
Air Measurements – Gainesville Office  
6312 NW 18th Drive, Suite 100  
Gainesville, Florida 32653  
(352) 260-1162  
Email: [jbowser@trcsolutions.com](mailto:jbowser@trcsolutions.com)

CC: Becky Keough, ADEQ Director via email: [keogh@adeq.state.ar.us](mailto:keogh@adeq.state.ar.us)  
Kara Allen, Environmental Engineer, USEPA Region 6 via email [Allen.Kara@epa.gov](mailto:Allen.Kara@epa.gov)

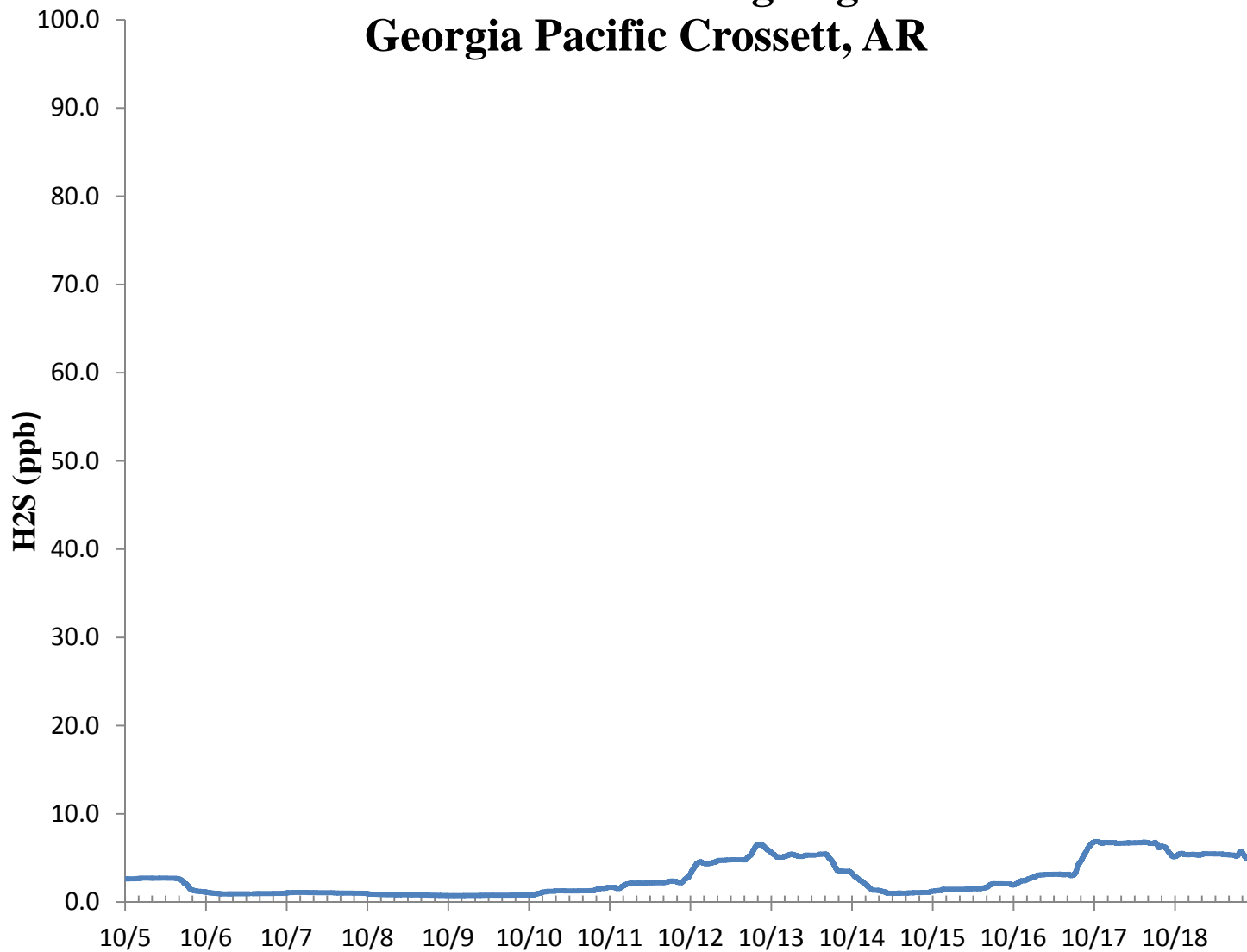
## H2S 30 Min Rolling Avg Georgia Pacific Crossett, AR



## H2S 8 Hr Rolling Avg Georgia Pacific Crossett, AR



## H2S 24 Hr Rolling Avg Georgia Pacific Crossett, AR



### H<sub>2</sub>S Assessment

GP - Crossett, AR			Compound of Interest: H <sub>2</sub> S					CV <sub>ub</sub> (%)	Bias (%)
Date	Meas Val (Y)	Audit Val (X)	d (Eqn. 1)	25th Percentile	d <sup>2</sup>	d	d  <sup>2</sup>		
10/5/2016 13:00	70.2	70.0	0.3	-2.500	0.082	0.286	0.082		
10/6/2016 13:00	68.5	70.0	-2.1	75th Percentile	4.592	2.143	4.592		
10/7/2016 13:00	69.4	70.0	-0.9	-0.857	0.735	0.857	0.735		
10/8/2016 13:00	66.6	70.0	-4.9		23.592	4.857	23.592		
10/9/2016 13:00	66.5	70.0	-5.0		25.000	5.000	25.000		
10/10/2016 13:00	66.8	70.0	-4.6		20.898	4.571	20.898		
10/11/2016 13:00	68.2	70.0	-2.6		6.612	2.571	6.612		
10/12/2016 13:00	68.4	70.0	-2.3		5.224	2.286	5.224		
10/13/2016 13:00	69.2	70.0	-1.1		1.306	1.143	1.306		
10/14/2016 13:00	69.6	70.0	-0.6		0.327	0.571	0.327		
10/15/2016 13:00	69.0	70.0	-1.4		2.041	1.429	2.041		
10/16/2016 13:00	69.2	70.0	-1.1		1.306	1.143	1.306		
10/17/2016 13:00	69.4	70.0	-0.9		0.735	0.857	0.735		
10/18/2016 13:00	69.4	70.0	-0.9		0.735	0.857	0.735		

<b>n</b>	<b>S<sub>d</sub></b>	<b>S<sub>d2</sub></b>	<b>Σ d </b>	<b>"AB" (Eqn 4)</b>
14	1.691	9.196	28.571	2.041
<b>n-1</b>	<b>Σd</b>	<b>Σd<sup>2</sup></b>	<b>Σ d <sup>2</sup></b>	<b>"AS" (Eqn 5)</b>
13	-28.000	93.184	93.184	1.638

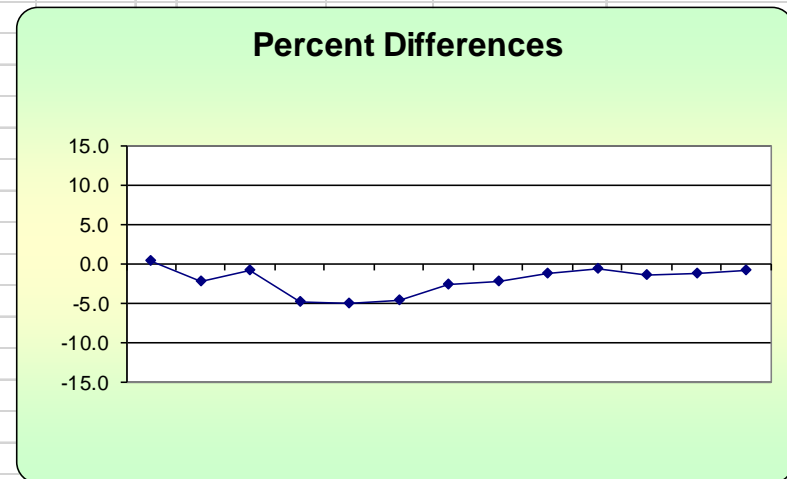
<b>Bias (%) (Eqn 3)</b>	Both Signs Positive
2.82	FALSE
<b>Signed Bias (%)</b>	Both Signs Negative
-2.82	TRUE

<b>CV (%) (Eqn 2)</b>	
2.3	

<b>Upper Probability Limit</b>	<b>Lower Probability Limit</b>
1.31	-5.31



Meteorological Summary

