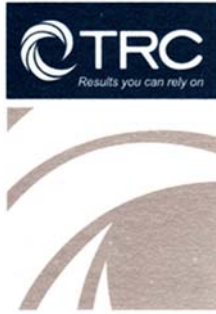


February 16, 2017



6312 NW 18<sup>th</sup> Drive  
Suite 100  
Gainesville, FL 32653

352.378.0332 PHONE  
352.378.0354 FAX

[www.TRCSolutions.com](http://www.TRCSolutions.com)

February 16, 2017

Ms. Lori Simmons  
Arkansas Department of Health  
4815 West Markham Street  
Little Rock, Arkansas 72205  
Via email [Lori.Simmons@arkansas.gov](mailto:Lori.Simmons@arkansas.gov)

**Re: Georgia-Pacific, Crossett Mill - Biweekly Air Monitoring Report for Hydrogen Sulfide**

Dear Ms. Simmons,

Following is the biweekly data summary for the Georgia-Pacific (GP) hydrogen sulfide (H<sub>2</sub>S) and meteorological monitoring program, at the GP Crossett mill, covering the calendar period of January 11, 2017 through January 24, 2017.

#### Summary of Results

Included in this report are three plots presenting H<sub>2</sub>S concentrations calculated with varied rolling average periods (30-minute, 8-hour, and 24-hour).

Also included in this report is a summary of results from the daily 1-point QC checks performed during this biweekly period. The QAPP establishes goals for precision and bias as a coefficient of variation (CV) <10% and ± 10%, respectively. Precision and bias are calculated in accordance with 40 CFR Part 58 Appendix A, Section 4.1.

There were multiple occurrences of minor data loss during this monitoring period, in addition to those resulting from automated daily 1-point QC and weekly calibration checks. Program updates are responsible for brief periods of data loss (<1hr) on January 12<sup>th</sup>, 17<sup>th</sup>, and 18<sup>th</sup>. These program updates also interrupted the 1-point QC check on January 19<sup>th</sup>. On January 20<sup>th</sup>, a manual calibration check and zero adjustment was performed resulting in approximately three hours of data loss. Results for available automated daily 1-point QC checks fall within the acceptable range, indicating the H<sub>2</sub>S monitor was operating in accordance with the QAPP.

Fourteen-day time series plots for all recorded meteorological (met) parameters are presented in the final table. All met parameters have 100% data capture for this report period.

Please feel free to contact me if you have any questions or need any additional data.



February 16, 2017

Sincerely,



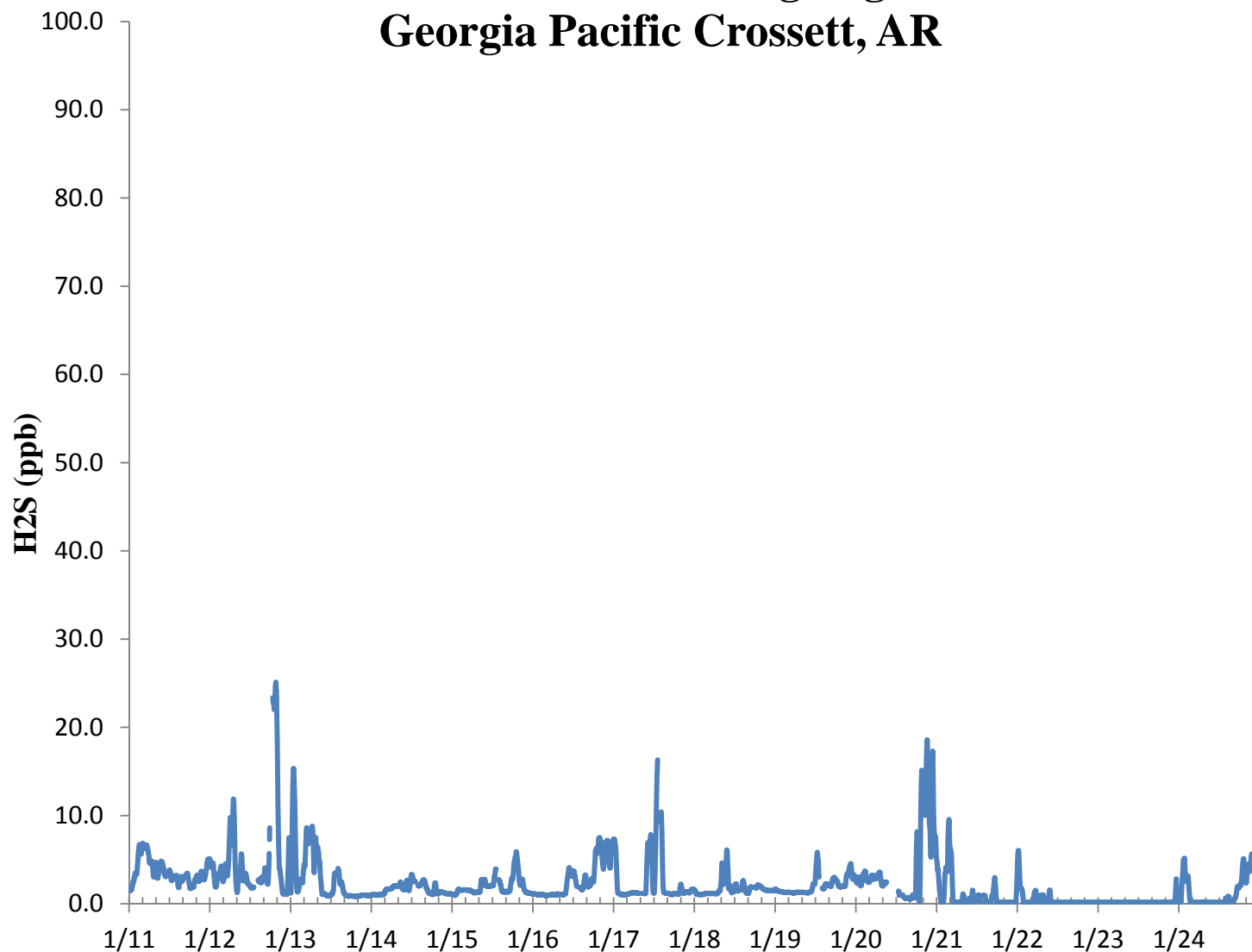
---

Jonathan Bowser  
Manager, Air Quality and Meteorological Monitoring

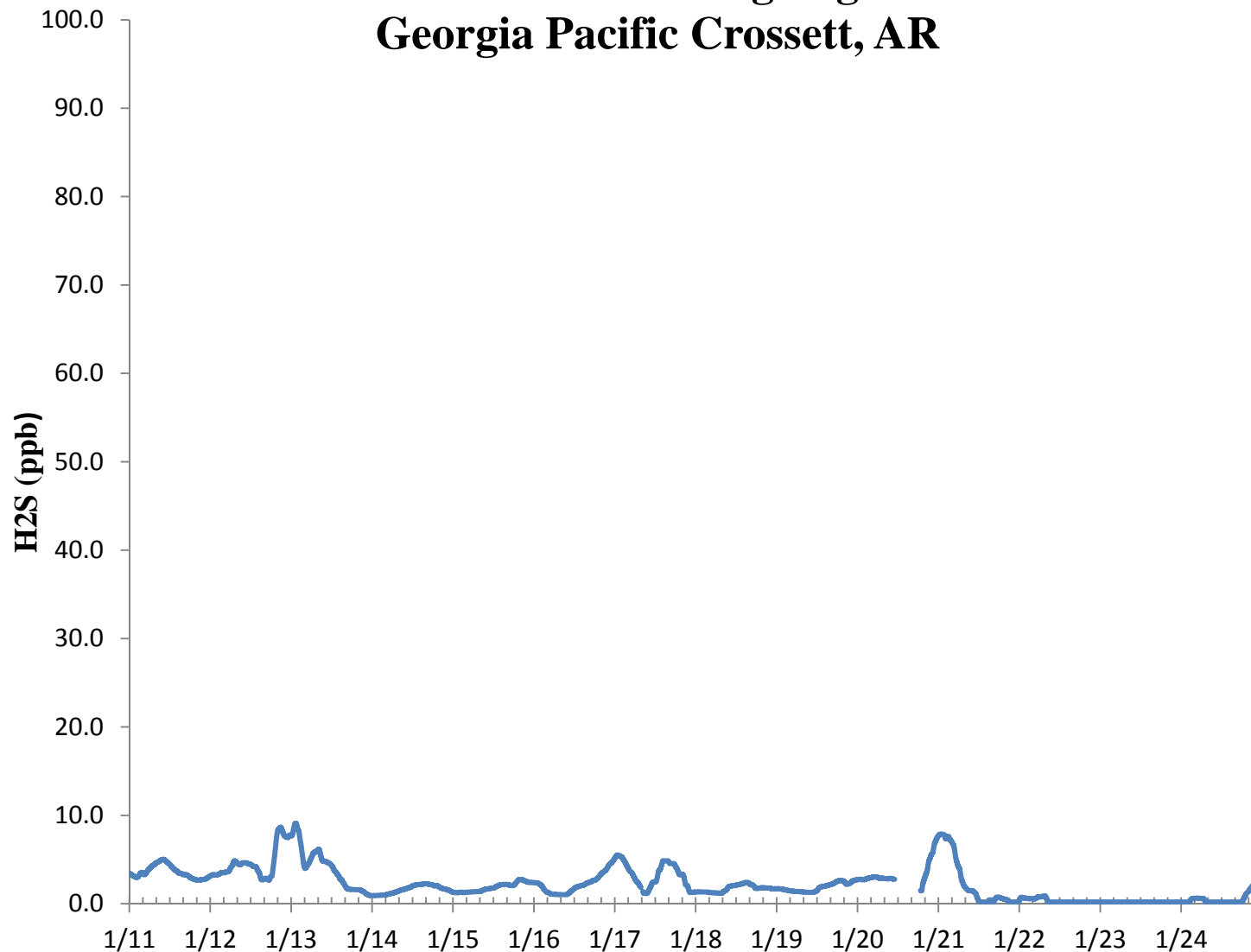
Air Measurements – Gainesville Office  
6312 NW 18th Drive, Suite 100  
Gainesville, Florida 32653  
(352) 260-1162  
Email: [jbowser@trcsolutions.com](mailto:jbowser@trcsolutions.com)

CC: Becky Keough, ADEQ Director via email: [keogh@adeq.state.ar.us](mailto:keogh@adeq.state.ar.us)  
Kara Allen, Environmental Engineer, USEPA Region 6 via email [Allen.Kara@epa.gov](mailto:Allen.Kara@epa.gov)

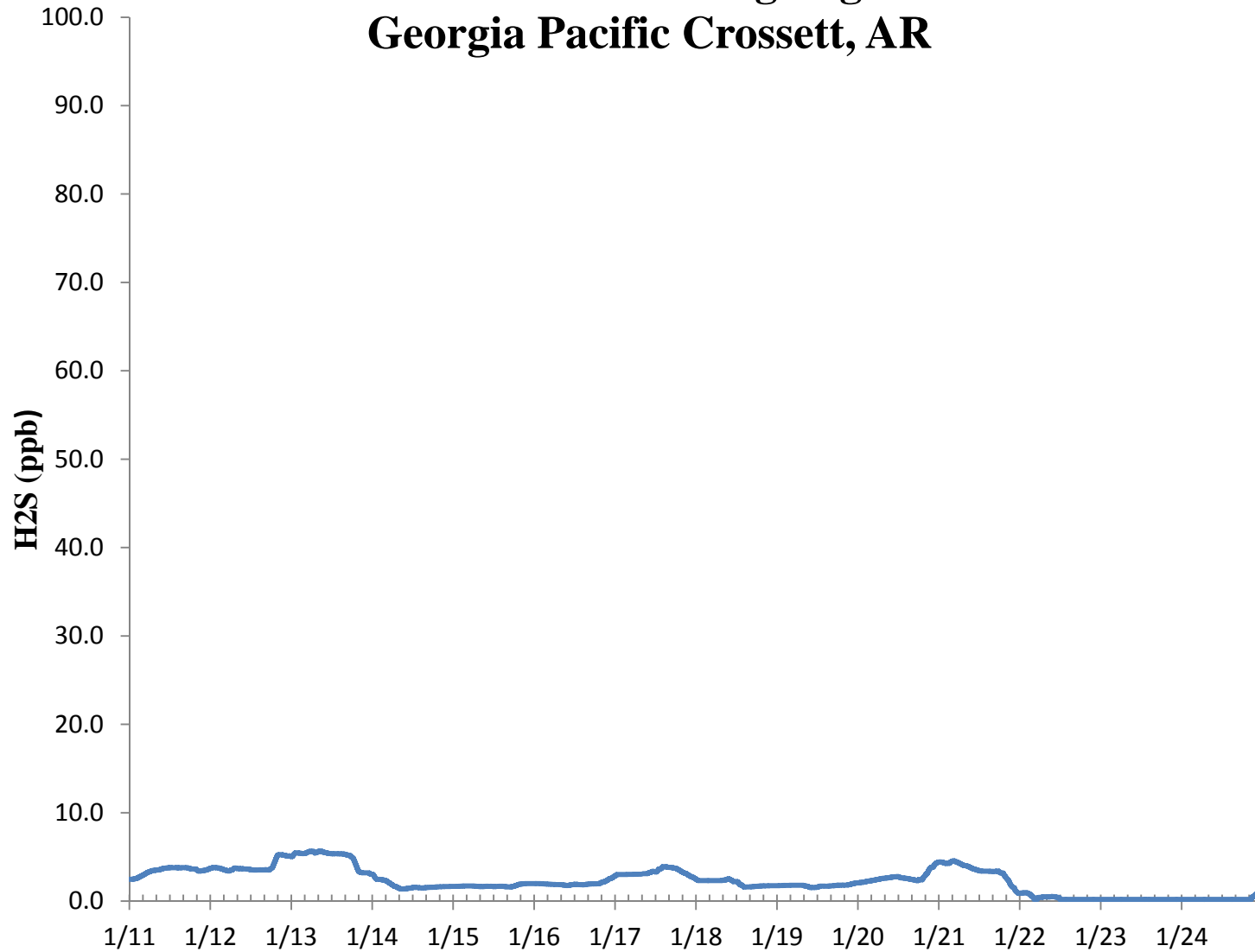
## H2S 30 Min Rolling Avg Georgia Pacific Crossett, AR



## H2S 8 Hr Rolling Avg Georgia Pacific Crossett, AR

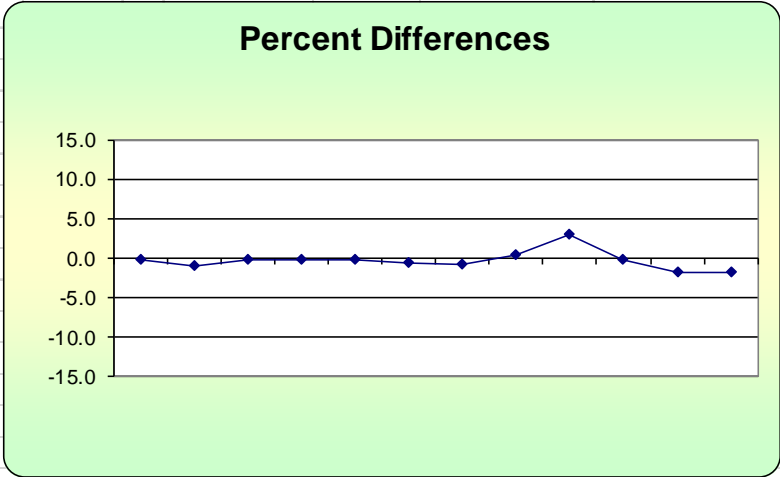


## H2S 24 Hr Rolling Avg Georgia Pacific Crossett, AR



H<sub>2</sub>S Assessment

GP - Crossett, AR			Compound of Interest: H <sub>2</sub> S					CV <sub>ub</sub> (%)	Bias (%)
Date	Meas Val (Y)	Audit Val (X)	d (Eqn. 1)	25th Percentile	d <sup>2</sup>	d	d  <sup>2</sup>		
1/11/2017 13:00	69.8	70.0	-0.3	-1.000	0.082	0.286	0.082		
1/12/2017 13:00	69.3	70.0	-1.0	<b>75th Percentile</b>	1.000	1.000	1.000	<b>n</b>	<b>S<sub>d</sub></b>
1/13/2017 13:00	69.9	70.0	-0.1	-0.143	0.020	0.143	0.020	13	1.189
1/14/2017 13:00	69.8	70.0	-0.3		0.082	0.286	0.082	<b>n-1</b>	<b>Σd</b>
1/15/2017 13:00	69.9	70.0	-0.1		0.020	0.143	0.020	12	-4.714
1/16/2017 13:00	69.6	70.0	-0.6		0.327	0.571	0.327	<b>S<sub>d2</sub></b>	<b>Σ d </b>
1/17/2017 13:00	69.5	70.0	-0.7		0.510	0.714	0.510	2.509	11.286
1/18/2017 13:00	70.2	70.0	0.3		0.082	0.286	0.082	<b>Σd<sup>2</sup></b>	<b>Σ d <sup>2</sup></b>
1/20/2017 13:00	72.1	70.0	3.0		9.000	3.000	9.000	18.673	18.673
1/21/2017 13:00	69.9	70.0	-0.1		0.020	0.143	0.020	<b>Bias (%) (Eqn 3)</b>	Both Signs Positive
1/22/2017 13:00	68.8	70.0	-1.7		2.939	1.714	2.939	1.29	FALSE
1/23/2017 13:00	68.8	70.0	-1.7		2.939	1.714	2.939	<b>Signed Bias (%)</b>	Both Signs Negative
1/24/2017 13:00	69.1	70.0	-1.3		1.653	1.286	1.653	-1.29	TRUE
								<b>CV (%) (Eqn 2)</b>	
								1.64	
								<b>Upper Probability Limit</b>	<b>Lower Probability Limit</b>
								1.97	-2.69



Meteorological Summary

