

6312 NW 18th Drive
Suite 100
Gainesville, FL 32653

352.378.0332 PHONE
352.378.0354 FAX

www.TRCSolutions.com

April 5, 2017

Ms. Lori Simmons
Arkansas Department of Health
4815 West Markham Street
Little Rock, Arkansas 72205
Via email Lori.Simmons@arkansas.gov

Re: Georgia-Pacific, Crossett Mill - Biweekly Air Monitoring Report for Hydrogen Sulfide

Dear Ms. Simmons,

Following is the biweekly data summary for the Georgia-Pacific (GP) hydrogen sulfide (H₂S) and meteorological monitoring program, at the GP Crossett mill, covering the calendar period of February 22, 2017 through March 7, 2017.

Summary of Results

Included in this report are three plots presenting H₂S concentrations calculated with varied rolling average periods (30-minute, 8-hour, and 24-hour). Please note, elevated H₂S concentrations were recorded on March 3rd. The highest recorded 30-minute and 8-hour rolling averages are presented in the table below.

| Date | Maximum Concentrations and Time Recorded | |
|---------------|--|--------------------------|
| | 30 minute | 8 hour |
| March 3, 2017 | 127.27 ppb at 03:49 | 52.5 ppb at 06:42– 08:20 |

Also included in this report is a summary of results from the daily 1-point QC checks performed during this biweekly period. The QAPP establishes goals for precision and bias as a coefficient of variation (CV) <10% and ± 10%, respectively. Precision and bias are calculated in accordance with 40 CFR Part 58 Appendix A, Section 4.1.

Additionally, weekly automated zero adjustment shave been put in place beginning February 1, 2017, so as to limit the effect of the analyzer's zero drift. There were a total of two zero checks performed during this biweekly report period; both within the acceptable range of ± 1.5 ppb, as defined in the QAPP. Results for these zero checks are presented below.

| Date | Zero Check |
|-------------|-------------------|
| 2/23/2017 | 0.4 |
| 3/2/2017 | 0.5 |

There were no occurrences of data loss during this monitoring period, other than those resulting from automated daily 1-point QC and weekly calibration checks. Results for available automated daily 1-point QC checks fall within the acceptable range, indicating the H₂S monitor was operating in accordance with the QAPP.

Fourteen-day time series plots for all recorded meteorological (met) parameters are presented in the final table. There was a power outage at the plant on February 28th; responsible for approximately six hours of data loss for all met parameters.

Please feel free to contact me if you have any questions or need any additional data.

Sincerely,

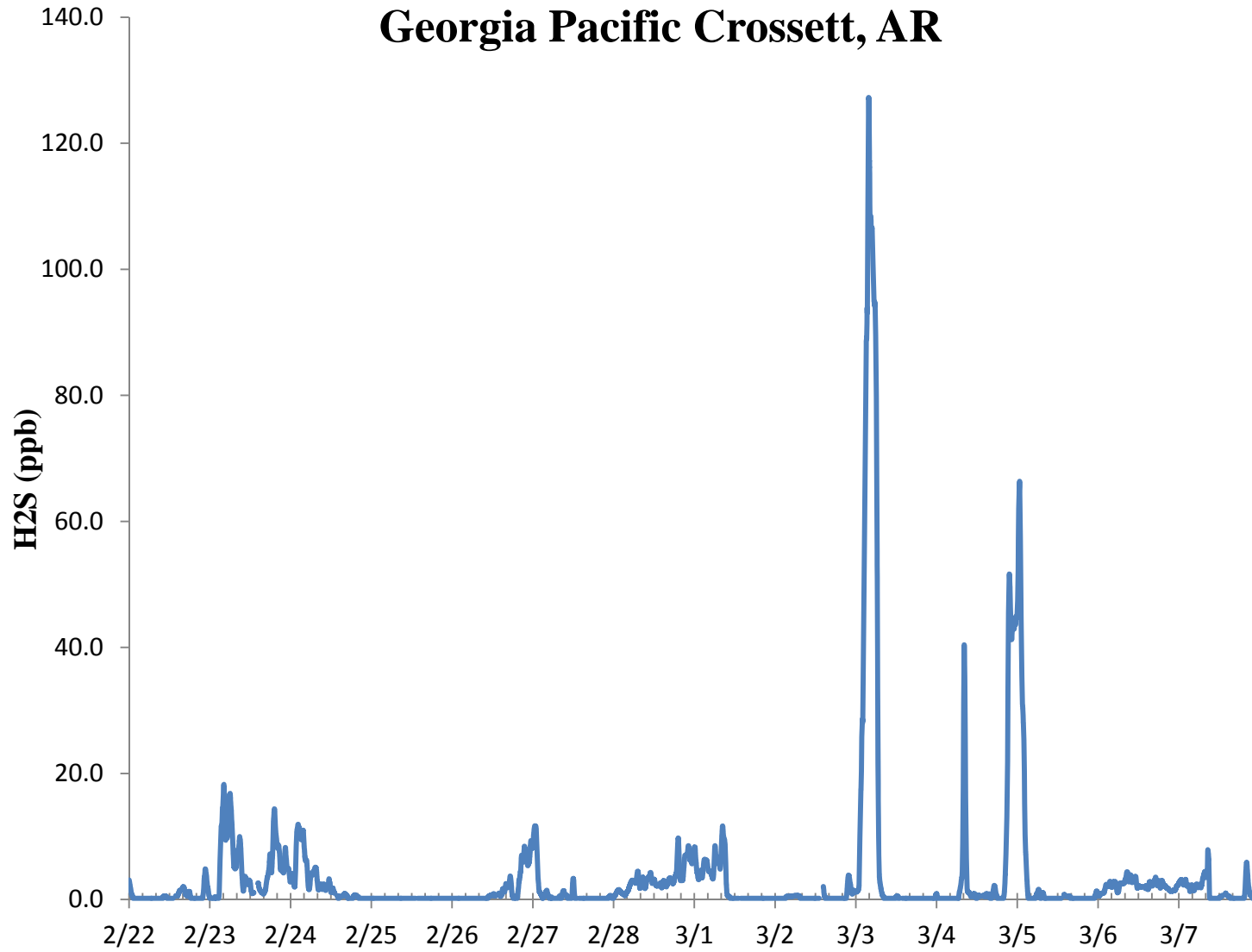


Jonathan Bowser
Manager, Air Quality and Meteorological Monitoring

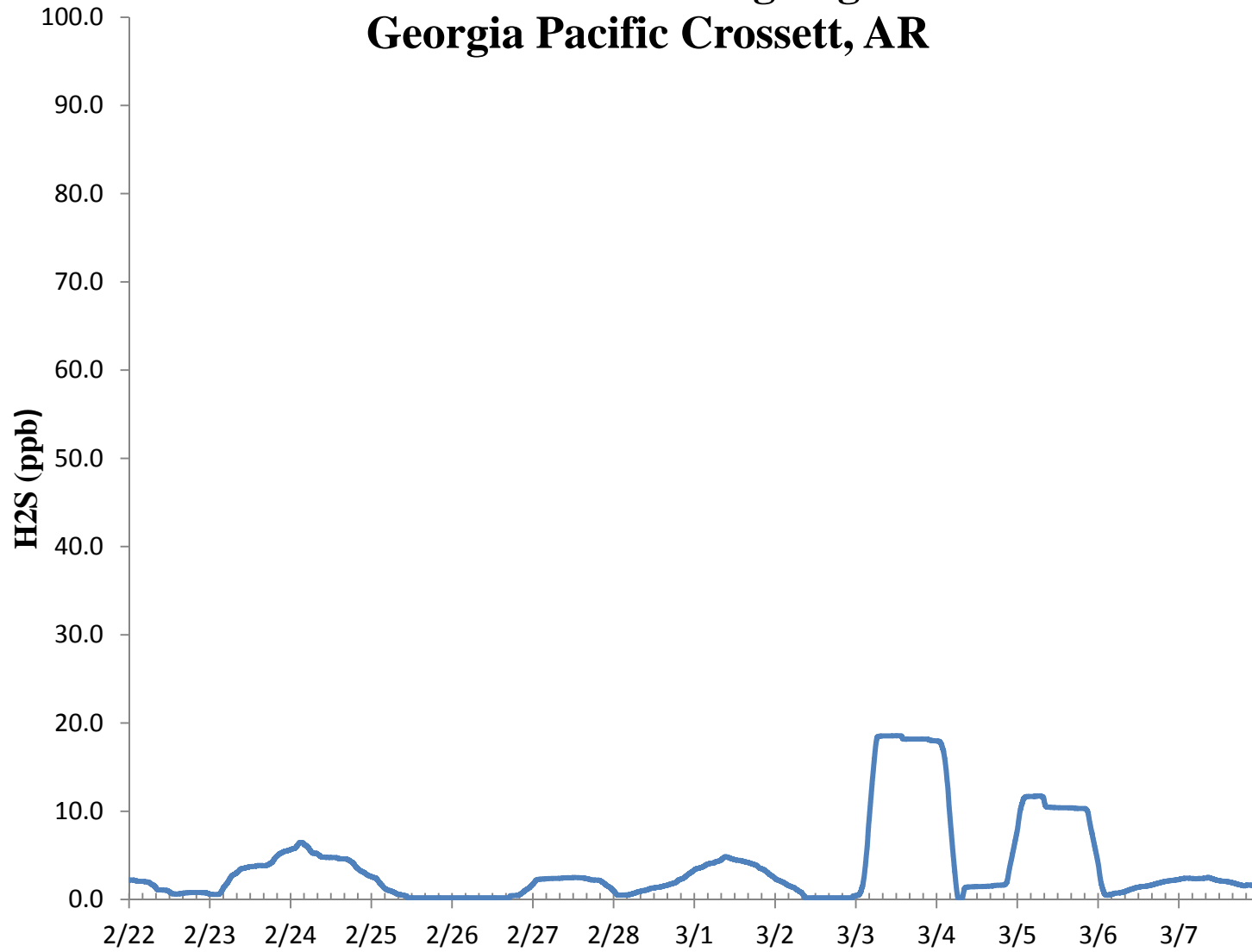
Air Measurements – Gainesville Office
6312 NW 18th Drive, Suite 100
Gainesville, Florida 32653
(352) 260-1162
Email: jbowser@trcsolutions.com

CC: Becky Keough, ADEQ Director via email: keogh@adeq.state.ar.us
Kara Allen, Environmental Engineer, USEPA Region 6 via email Allen.Kara@epa.gov

H2S 30 Min Rolling Avg Georgia Pacific Crossett, AR



H2S 24 Hr Rolling Avg Georgia Pacific Crossett, AR



H₂S Assessment

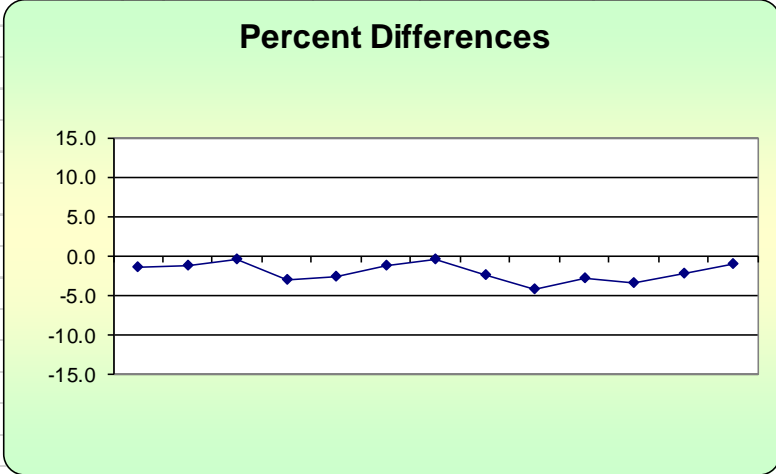
| GP - Crossett, AR | | | Compound of Interest: H ₂ S | | | | CV _{ub} (%) | Bias (%) |
|-------------------|--------------|---------------|--|-----------------|----------------|-------|----------------------|----------|
| Date | Meas Val (Y) | Audit Val (X) | d (Eqn. 1) | 25th Percentile | d ² | d | d ² | |
| 2/22/2017 13:00 | 69.0 | 70.0 | -1.4 | -2.679 | 2.041 | 1.429 | 2.041 | |
| 2/23/2017 13:00 | 69.2 | 70.0 | -1.1 | 75th Percentile | 1.306 | 1.143 | 1.306 | |
| 2/24/2017 13:00 | 69.7 | 70.0 | -0.4 | -1.179 | 0.184 | 0.429 | 0.184 | |
| 2/25/2017 13:00 | 67.9 | 70.0 | -3.0 | | 9.000 | 3.000 | 9.000 | |
| 2/26/2017 13:00 | 68.2 | 70.0 | -2.6 | | 6.612 | 2.571 | 6.612 | |
| 2/27/2017 13:00 | 69.1 | 70.0 | -1.3 | | 1.653 | 1.286 | 1.653 | |
| 2/28/2017 13:00 | 69.7 | 70.0 | -0.4 | | 0.184 | 0.429 | 0.184 | |
| 3/1/2017 13:00 | 68.3 | 70.0 | -2.4 | | 5.898 | 2.429 | 5.898 | |
| 3/2/2017 13:00 | 67.0 | 70.0 | -4.3 | | 18.367 | 4.286 | 18.367 | |
| 3/3/2017 13:00 | 68.1 | 70.0 | -2.7 | | 7.367 | 2.714 | 7.367 | |
| 3/4/2017 13:00 | 67.6 | 70.0 | -3.4 | | 11.755 | 3.429 | 11.755 | |
| 3/5/2017 13:00 | 68.5 | 70.0 | -2.1 | | 4.592 | 2.143 | 4.592 | |
| 3/6/2017 13:00 | 69.3 | 70.0 | -1.0 | | 1.000 | 1.000 | 1.000 | |
| 3/7/2017 13:00 | 68.7 | 70.0 | -1.9 | | 3.449 | 1.857 | 3.449 | |

| | | | | |
|------------|----------------------|-----------------------|-------------------------|---------------------|
| n | S_d | S_{d2} | Σ d | "AB" (Eqn 4) |
| 14 | 1.138 | 5.167 | 28.143 | 2.010 |
| n-1 | Σd | Σd² | Σ d ² | "AS" (Eqn 5) |
| 13 | -28.143 | 73.408 | 73.408 | 1.138 |

| | |
|-------------------------|---------------------|
| Bias (%) (Eqn 3) | Both Signs Positive |
| 2.55 | FALSE |
| Signed Bias (%) | Both Signs Negative |
| -2.55 | TRUE |

| | |
|-----------------------|------|
| CV (%) (Eqn 2) | 1.55 |
|-----------------------|------|

| | | | |
|--------------------------------|------|--------------------------------|-------|
| Upper Probability Limit | 0.22 | Lower Probability Limit | -4.24 |
|--------------------------------|------|--------------------------------|-------|



Meteorological Summary

