

June 15, 2017



6312 NW 18<sup>th</sup> Drive  
Suite 100  
Gainesville, FL 32653

352.378.0332 PHONE  
352.378.0354 FAX

[www.TRCSolutions.com](http://www.TRCSolutions.com)

June 15, 2017

Ms. Lori Simmons  
Arkansas Department of Health  
4815 West Markham Street  
Little Rock, Arkansas 72205  
Via email [Lori.Simmons@arkansas.gov](mailto:Lori.Simmons@arkansas.gov)

**Re: Georgia-Pacific, Crossett Mill - Biweekly Air Monitoring Report for Hydrogen Sulfide**

Dear Ms. Simmons,

Following is the biweekly data summary for the Georgia-Pacific (GP) hydrogen sulfide (H<sub>2</sub>S) and meteorological monitoring program, at the GP Crossett mill, covering the calendar period of May 17, 2017 through May 30, 2017.

Summary of Results

Included in this report are three plots presenting H<sub>2</sub>S concentrations calculated with varied rolling average periods (30-minute, 8-hour, and 24-hour).

Also included in this report is a summary of results from the daily 1-point QC checks performed during this biweekly period. The QAPP establishes goals for precision and bias as a coefficient of variation (CV) <10% and ± 10%, respectively. Precision and bias are calculated in accordance with 40 CFR Part 58 Appendix A, Section 4.1.

Additionally, weekly automated zero adjustments have been put in place beginning February 1, 2017, so as to limit the effect of the analyzer's zero drift. There were a total of two zero checks performed during this biweekly report period; both within the acceptable range of ± 1.5 ppb, as defined in the QAPP. Results for these zero checks are presented below.

Date	Zero Check
5/18/2017	0.4
5/25/2017	-0.1

There was one minor occurrence of data loss during this monitoring period, in addition to those resulting from automated daily 1-point QC and weekly calibration checks. On the morning of May 23<sup>rd</sup> approximately 20 minutes of H<sub>2</sub>S data was lost due to a power interruption. Results for daily 1-



June 15, 2017

point QC checks fall within the acceptable range, indicating the H<sub>2</sub>S monitor was operating in accordance with the QAPP.

Fourteen-day time series plots for all recorded meteorological (met) parameters are presented in the final table. There were brief periods of missing met data on May 20<sup>th</sup> and 22<sup>nd</sup> (less than 30 minutes in total) due to power interruptions.

Please feel free to contact me if you have any questions or need any additional data.

Sincerely,



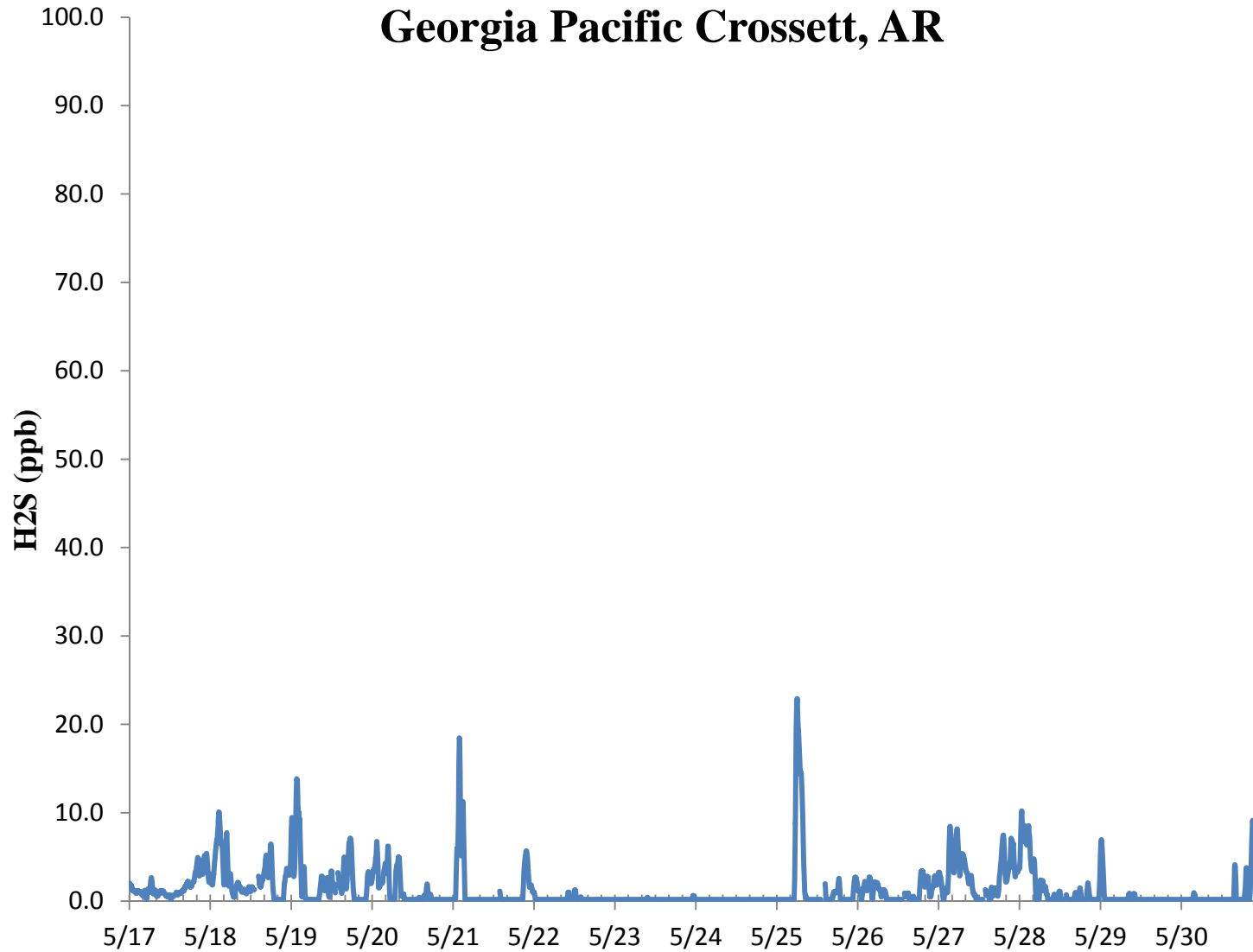
---

Jonathan Bowser  
Manager, Air Quality and Meteorological Monitoring

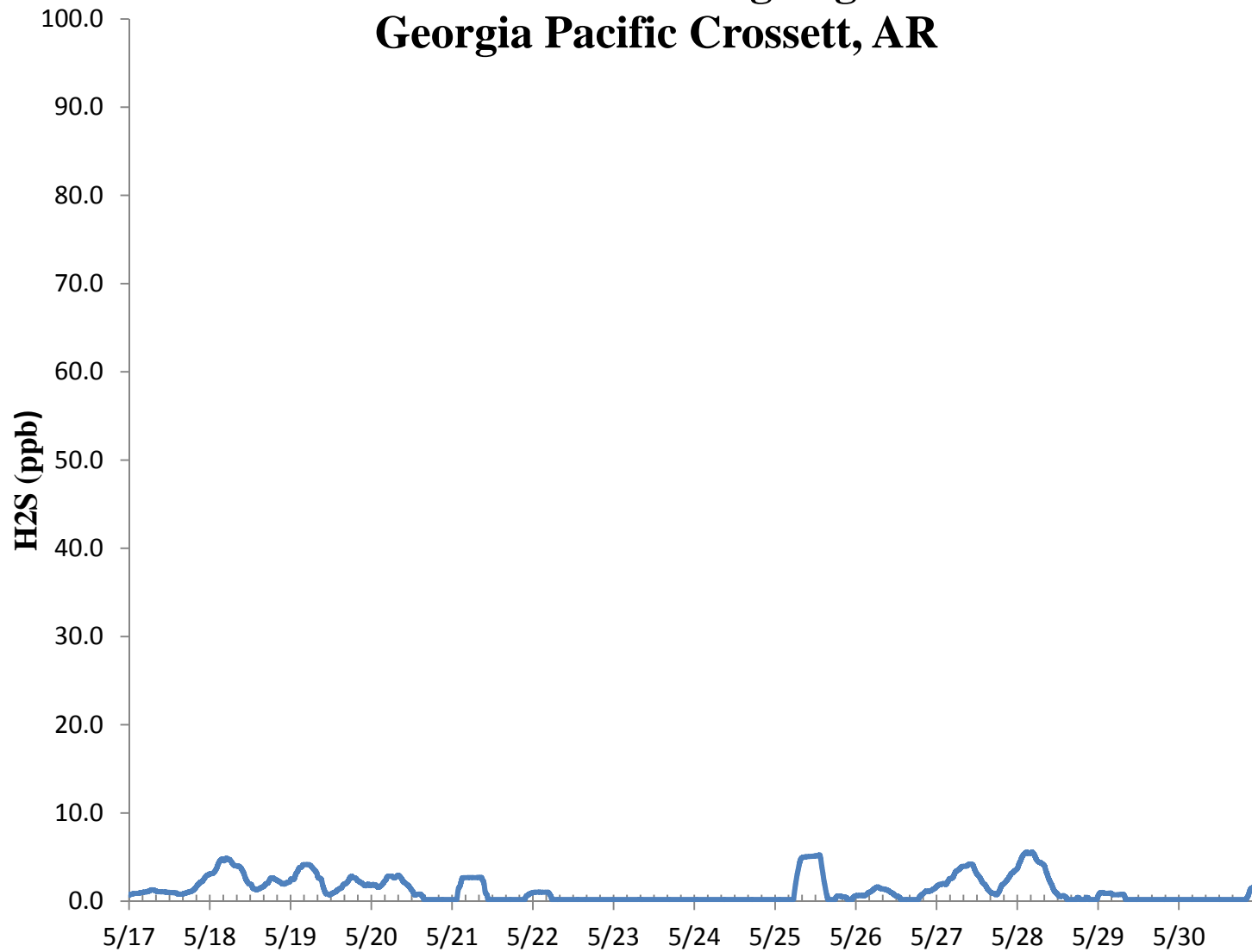
Air Measurements – Gainesville Office  
6312 NW 18th Drive, Suite 100  
Gainesville, Florida 32653  
(352) 260-1162  
Email: [jbowser@trcsolutions.com](mailto:jbowser@trcsolutions.com)

CC: Becky Keough, ADEQ Director via email: [keogh@adeq.state.ar.us](mailto:keogh@adeq.state.ar.us)  
Kara Allen, Environmental Engineer, USEPA Region 6 via email [Allen.Kara@epa.gov](mailto:Allen.Kara@epa.gov)

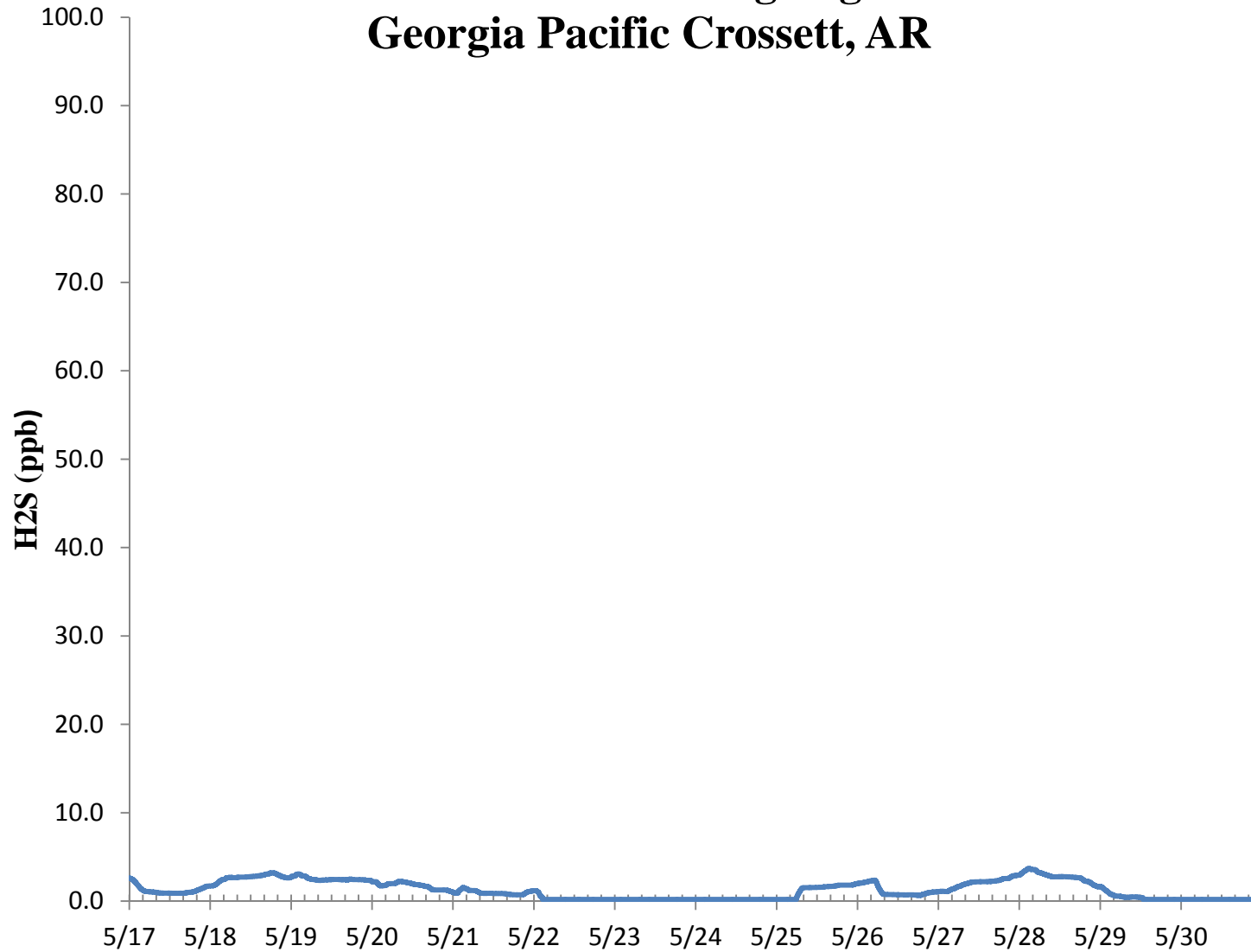
## H2S 30 Min Rolling Avg Georgia Pacific Crossett, AR



## H2S 8 Hr Rolling Avg Georgia Pacific Crossett, AR



## H2S 24 Hr Rolling Avg Georgia Pacific Crossett, AR



### H<sub>2</sub>S Assessment

GP - Crossett, AR			Compound of Interest: H <sub>2</sub> S					CV <sub>ub</sub> (%)	Bias (%)
Date	Meas Val (Y)	Audit Val (X)	d (Eqn. 1)	25th Percentile	d <sup>2</sup>	d	d  <sup>2</sup>		
5/17/2017 13:00	68.3	70.0	-2.4	-5.107	5.898	2.429	5.898		
5/18/2017 13:00	67.9	70.0	-3.0	75th Percentile	9.000	3.000	9.000	n	S <sub>d</sub>
5/19/2017 13:00	69.1	70.0	-1.3	-3.071	1.653	1.286	1.653	14	1.352
5/20/2017 13:00	67.7	70.0	-3.3		10.796	3.286	10.796	n-1	Σd
5/21/2017 13:00	67.1	70.0	-4.1		17.163	4.143	17.163	13	-55.286
5/22/2017 13:00	68.1	70.0	-2.7		7.367	2.714	7.367		Σd <sup>2</sup>
5/23/2017 13:00	66.4	70.0	-5.1		26.449	5.143	26.449		Σ d
5/24/2017 13:00	66.1	70.0	-5.6		31.041	5.571	31.041		Σ d  <sup>2</sup>
5/25/2017 13:00	66.4	70.0	-5.1		26.449	5.143	26.449		
5/26/2017 13:00	67.3	70.0	-3.9		14.878	3.857	14.878		
5/27/2017 13:00	67.7	70.0	-3.3		10.796	3.286	10.796		
5/28/2017 13:00	66.5	70.0	-5.0		25.000	5.000	25.000		
5/29/2017 13:00	65.8	70.0	-6.0		36.000	6.000	36.000		
5/30/2017 13:00	66.9	70.0	-4.4		19.612	4.429	19.612		

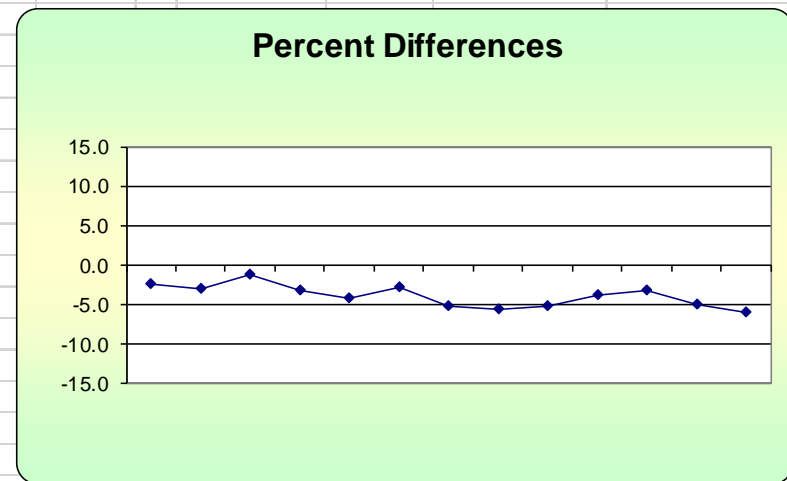
<b>Bias (%) (Eqn 3)</b>	4.59	Both Signs Positive
<b>Signed Bias (%)</b>	-4.59	Both Signs Negative
<b>TRUE</b>		

<b>CV (%) (Eqn 2)</b>	1.84
-----------------------	------

<b>Upper Probability Limit</b>	-1.3	<b>Lower Probability Limit</b>	-6.6
--------------------------------	------	--------------------------------	------



Meteorological Summary

